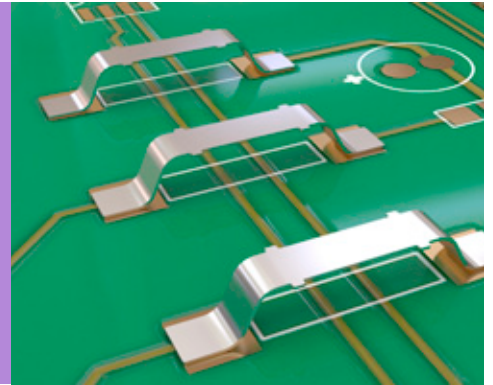


# SMT Jumper Link

- Designed to link PCB tracks where through hole links are not possible.
- Typical applications include use on aluminium backplanes in power applications.
- High current.
- Small footprint.
- Low profile options available for space saving design.



SPECIFICATION		12.3mm LONG								
<div>➤ Materials</div> <div>Material: Copper Alloy (S1621, S1911) Copper (S1731)</div> <div>Finish: See Order Code</div>		<div>Recommended PC Board Pattern</div>								
<div>➤ Packaging</div> <div>Packaging format: Tape &amp; Reel or Loose</div> <div>Reel quantity: S1621: 5,000 on a Ø330mm reel S1731: 2,500 on a Ø330mm reel S1911: 4,000 on a Ø330mm reel</div>										
6.86mm LONG, 2.54mm HIGH		6.85mm LONG, 0.97mm HIGH								
<div>Recommended PC Board Pattern</div>		<div>Recommended PC Board Pattern</div>								
HOW TO ORDER										
<div>SERIES CODE</div> <div>S1 XX 1 - 46 R</div>		<div>PACKAGING</div> <table><tr><td>R</td><td>Tape &amp; Reeled</td></tr><tr><td>Blank</td><td>Loose</td></tr></table> <div>FINISH</div> <table><tr><td>46</td><td>Tin</td><td>PG</td></tr></table>		R	Tape & Reeled	Blank	Loose	46	Tin	PG
R	Tape & Reeled									
Blank	Loose									
46	Tin	PG								
<div>TYPE</div> <table><tr><td>62</td><td>12.3mm long</td></tr><tr><td>73</td><td>6.86mm long, 2.54mm high</td></tr><tr><td>91</td><td>6.85mm long, 0.97mm high</td></tr></table>		62	12.3mm long	73	6.86mm long, 2.54mm high	91	6.85mm long, 0.97mm high			
62	12.3mm long									
73	6.86mm long, 2.54mm high									
91	6.85mm long, 0.97mm high									

All dimensions in mm.

# Mouser Electronics

Authorized Distributor

Click to View Pricing, Inventory, Delivery & Lifecycle Information:

Harwin:

S1731-46R